

**For Lease  
Office/Retail  
Suite**



**21651 E. Country Vista Drive, Suite E**  
Liberty Lake, WA 99019

## **Features:**

- Suite D: Approx. 1,228 square feet
- Strategic location to service all of Liberty Lake and Surrounding Neighborhoods
- On Country Vista Drive- The Gateway to Spokane Valley
- Substantial Parking
- Excellent Signage and Visibility
- Existing Tenants Include:
  - Brothers Office Pizza
  - The Mat Yoga
  - Exercise Institute
  - Envoy Mortgage
  - Lakeside Holistic Health
- Ideal Location for Insurance, Physical Therapy, Sports Medicine, General Office, or Retail

**Lease Rate: Suite D: \$14.40/sq. ft. NNN**

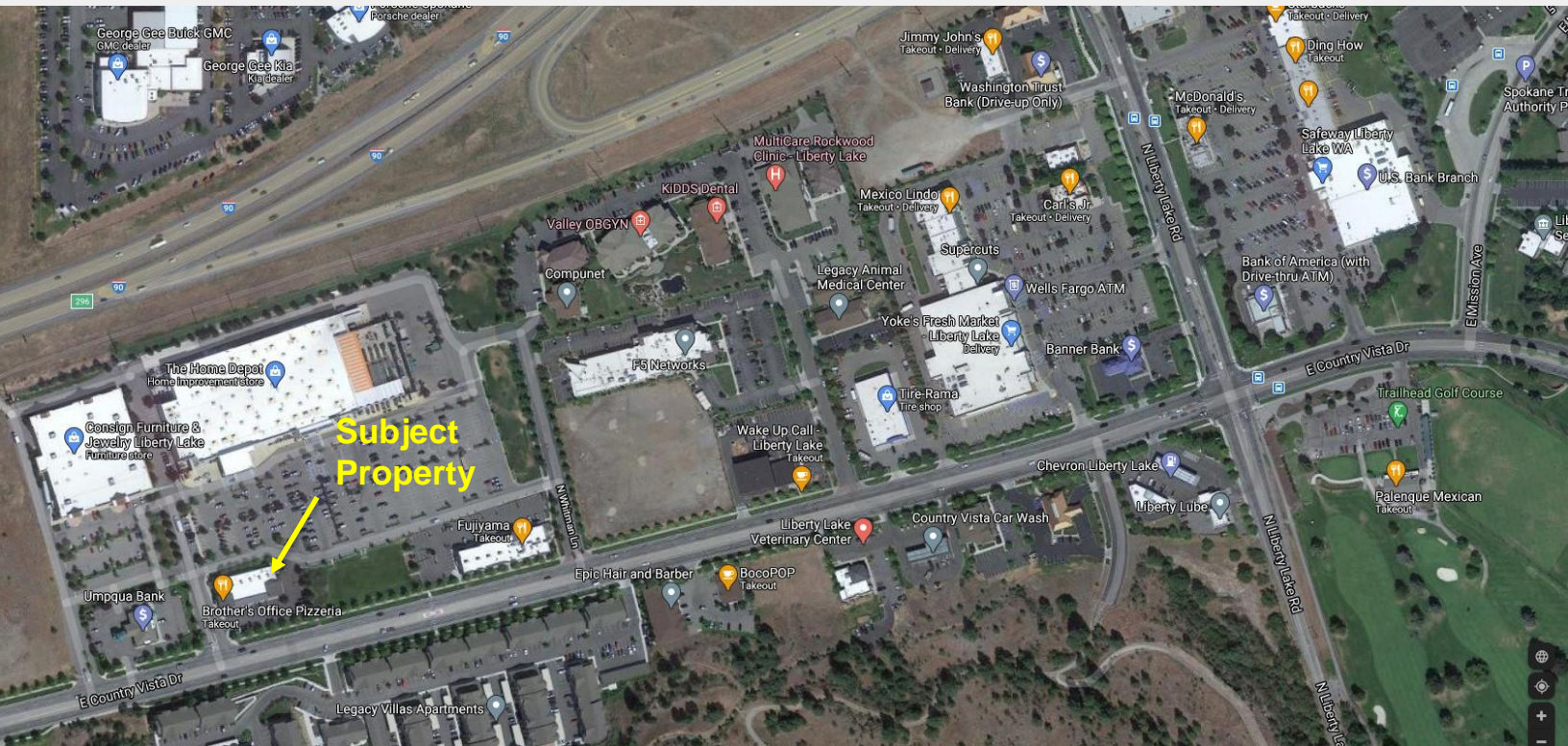
NEITHER SELLER OR NAI BLACK COMMERCIAL WARRANT OR REPRESENTS THE SIZE OR MEASUREMENTS ON THE LAND, BUILDING, OR LEASE SPACE BEING MARKETED FOR SALE OR LEASE IS ACCURATE. NO WARRANTY OR REPRESENTATION, EXPRESS OR IMPLIED, IS MADE AS TO THE ACCURACY OF INFORMATION CONTAINED HEREIN, AND THE SAME IS SUBMITTED SUBJECT TO ERRORS, OMISSIONS, CHANGE OF PRICE, RENTAL OR OTHER CONDITIONS, PRIOR SALE, LEASE OR FINANCING OR WITHDRAWAL WITHOUT NOTICE, AND OF ANY SPECIAL LISTING CONDITIONS IMPOSED BY OUR PRINCIPLES NO WARRANTIES OR REPRESENTATIONS ARE MADE AS TO THE CONDITION OF THE PROPERTY OR HAZARDS CONTAINED THEREIN ARE ANY TO BE IMPLIED.

**Jim Koon, Managing Broker**  
(208) 665-6475 or (208) 640-9470  
jim@cdabroker.com

Black Commercial, Inc  
105 N. 1<sup>st</sup> Street, Suite 300  
Coeur d'Alene, Idaho 83814  
[www.cdabroker.com](http://www.cdabroker.com)

## For Lease Office/Retail Suite

21651 E. Country Vista Drive, Suite E  
Liberty Lake, WA 99019



NEITHER SELLER OR NAI BLACK COMMERCIAL WARRANT OR REPRESENTS THE SIZE OR MEASUREMENTS ON THE LAND, BUILDING, OR LEASE SPACE BEING MARKETED FOR SALE OR LEASE IS ACCURATE. NO WARRANTY OR REPRESENTATION, EXPRESS OR IMPLIED, IS MADE AS TO THE ACCURACY OF INFORMATION CONTAINED HEREIN, AND THE SAME IS SUBMITTED SUBJECT TO ERRORS, OMISSIONS, CHANGE OF PRICE, RENTAL OR OTHER CONDITIONS, PRIOR SALE, LEASE OR FINANCING OR WITHDRAWAL WITHOUT NOTICE, AND OF ANY SPECIAL LISTING CONDITIONS IMPOSED BY OUR PRINCIPLES NO WARRANTIES OR REPRESENTATIONS ARE MADE AS TO THE CONDITION OF THE PROPERTY OR HAZARDS CONTAINED THEREIN ARE ANY TO BE IMPLIED.

**Jim Koon, Managing Broker**  
(208) 665-6475 or (208) 640-9470  
jim@cdabroker.com

Black Commercial, Inc  
105 N. 1st Street, Suite 300  
Coeur d'Alene, Idaho 83814  
[www.cdabroker.com](http://www.cdabroker.com)