

Class A Office Suite For Lease



6500 Mineral Drive
Coeur d'Alene, Idaho 83814

Available Suites

- **Suite 100:** 1,668 sq. ft. corner office at entrance of building. Three Private Offices, Conference Room, and Open Bull Pen. Natural light from windows.

**Lease Rate: \$21.00 per square foot
Full Service**

Building Site Description and Amenities

Upon entering Hecla Mining building customers and clients are greeted by its 240 foot barrel skylight and natural foliage in its expansive common areas.

This 75,000 square foot Class A office building is situated on a 6 acre lush park-like setting. Offering employees 168 parking stalls and convenient visitor parking in its roundabout parking lot. Employees enjoy use of its gym and underground racquetball court.

Other amenities include: patio and courtyard, security key fob access, hydronic heating and cooling system, basement storage, and natural light throughout offices. Conveniently located in center of Coeur d'Alene off Highway 95 with national retail stores, restaurants, and financial institutions close by.

For more information:

Jim Koon, Managing Broker

(208) 665-6475 or (208) 640-9470

jim@cdabroker.com



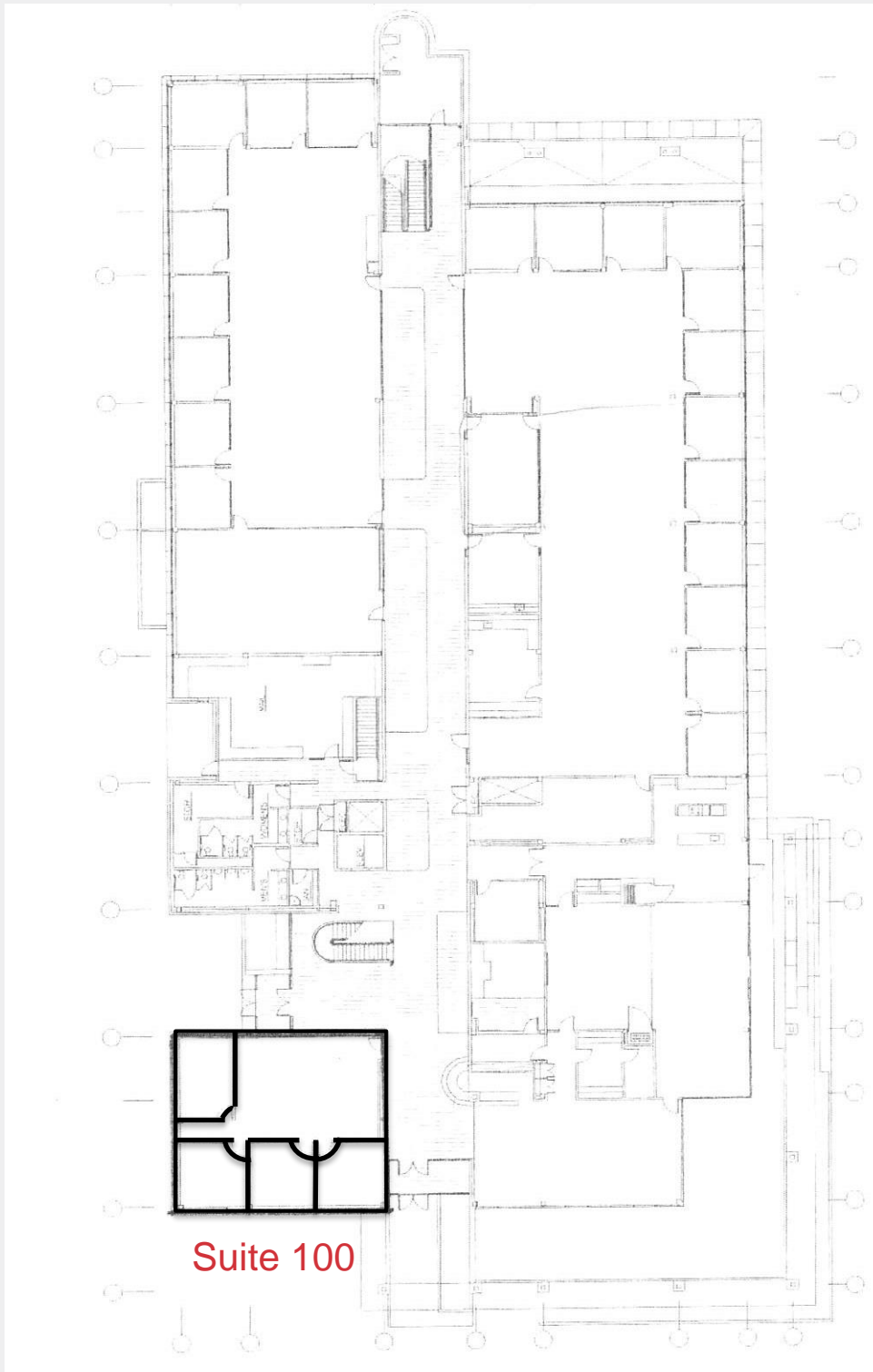
Jim Koon, Managing Broker

(208) 665-6475 or (208) 640-9470

jim@cdabroker.com

NEITHER SELLER OR NAI BLACK COMMERCIAL WARRANT OR REPRESENTS THE SIZE OR MEASUREMENTS ON THE LAND, BUILDING, OR LEASE SPACE BEING MARKETED FOR SALE OR LEASE IS ACCURATE. NO WARRANTY OR REPRESENTATION, EXPRESS OR IMPLIED, IS MADE AS TO THE ACCURACY OF INFORMATION CONTAINED HEREIN, AND THE SAME IS SUBMITTED SUBJECT TO ERRORS, OMISSIONS, CHANGE OF PRICE, RENTAL OR OTHER CONDITIONS, PRIOR SALE, LEASE OR FINANCING OR WITHDRAWAL WITHOUT NOTICE, AND OF ANY SPECIAL LISTING CONDITIONS IMPOSED BY OUR PRINCIPLES NO WARRANTIES OR REPRESENTATIONS ARE MADE AS TO THE CONDITION OF THE PROPERTY OR HAZARDS CONTAINED THEREIN ARE ANY TO BE IMPLIED.

Black Commercial, Inc
105 N. 1st Street, Suite 300
Coeur d'Alene, Idaho 83814
www.cdabroker.com



Jim Koon, Managing Broker
(208) 665-6475 or (208) 640-9470
jim@cdabroker.com

Black Commercial, Inc
105 N. 1st Street, Suite 300
Coeur d'Alene, Idaho 83814
www.cdabroker.com

NEITHER SELLER OR NAI BLACK COMMERCIAL WARRANT OR REPRESENTS THE SIZE OR MEASUREMENTS ON THE LAND, BUILDING, OR LEASE SPACE BEING MARKETED FOR SALE OR LEASE IS ACCURATE. NO WARRANTY OR REPRESENTATION, EXPRESS OR IMPLIED, IS MADE AS TO THE ACCURACY OF INFORMATION CONTAINED HEREIN, AND THE SAME IS SUBMITTED SUBJECT TO ERRORS, OMISSIONS, CHANGE OF PRICE, RENTAL OR OTHER CONDITIONS, PRIOR SALE, LEASE OR FINANCING OR WITHDRAWAL WITHOUT NOTICE, AND OF ANY SPECIAL LISTING CONDITIONS IMPOSED BY OUR PRINCIPLES NO WARRANTIES OR REPRESENTATIONS ARE MADE AS TO THE CONDITION OF THE PROPERTY OR HAZARDS CONTAINED THEREIN ARE ANY TO BE IMPLIED.