

**Downtown Coeur d'Alene
1/2 Block Frontage
26,000 square foot building
For Sale**



208 E Coeur d'Alene Ave

Downtown Coeur d'Alene, Idaho



Bill Graves, Sales Associate

(208) 660-5671 or (208) 664-5984
bgraves@naiblack.com

Highlights:

- Former Sta-Fit Athletic Facility
- Parcel Size: 16,552 s/f land (1/2 city block)
- Two Parcels – Legal Description: CDA & Kings Add, Lot 1, 2, 3 Block G URD Lake District 1997
- Building Size: 26,000 s/f building – two buildings
- Downtown corner with streetside and alley access
- Store front windows on 2nd St. and Coeur d'Alene Ave.
- Zoning: Downtown Core District
- 2015 Taxes: \$26,653

Sale Price: \$1,500,000

Jim Koon, Managing Broker

(208) 665-6475 or (208) 640-9470
jim@cdabroker.com

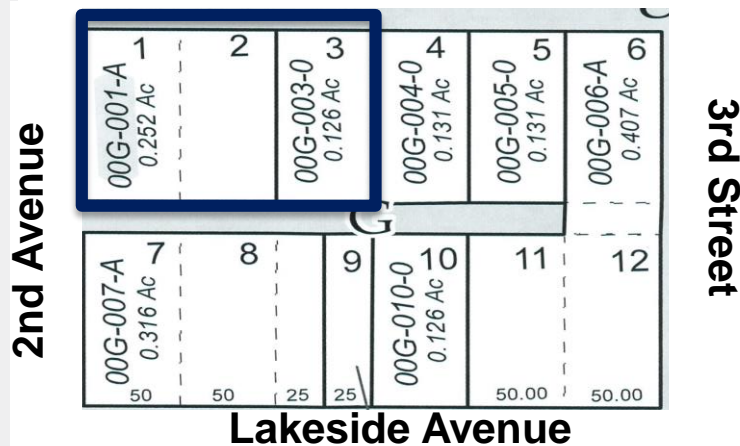
**Downtown Commercial
Building For Sale
\$1,500,000.00**

208 E Coeur d'Alene Ave

Downtown Coeur d'Alene, Idaho



Coeur d'Alene Avenue



DEMOGRAPHICS

	1 Mile	3 Miles	5 Miles
POPULATION			
2015 Population	8,299	31,195	61,919
HOUSEHOLDS			
2015 Households	3,832	13,596	25,065
2015 Median HH Income	\$38,983	\$40,062	\$45,624
2015 Per Capita Income	\$26,256	\$24,981	\$24,855
2015 Average HH Income	\$54,252	\$55,286	\$60,175

Bill Graves, Sales Associate

(208) 660-5671 or (208) 664-5984

bgraves@naiblack.com

Jim Koon, Managing Broker

(208) 665-6475 or (208) 640-9470

jim@cdabroker.com