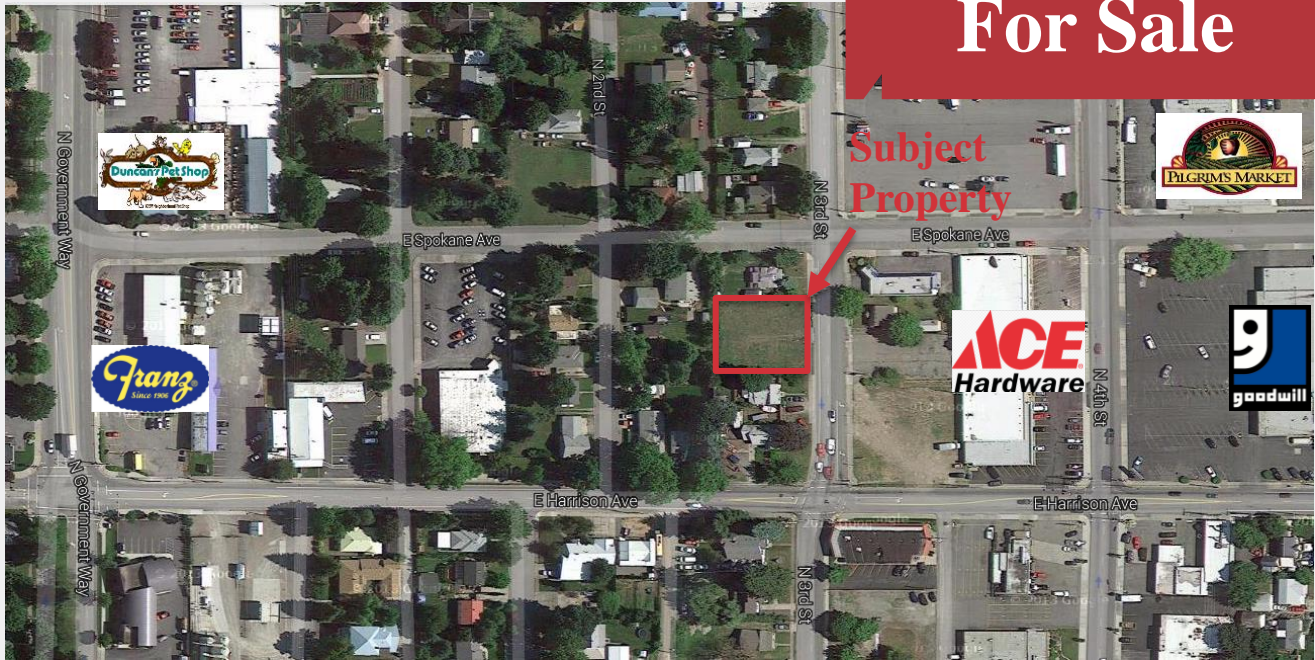


**Midtown
Commercial
Land
For Sale**



1215 N 3rd Street
Coeur d'Alene, Idaho 83814

Comments:

Located near the intersection of Harrison with ACE Hardware, Runge Furniture, Safeway, and Pilgrims Market close by.

Features:

- **Land Size:** 0.255 Acres
- **Zoning:** C-17L City of Coeur d'Alene
- **2014 Taxes:** \$1,169.00
- **Access:** Minutes from Downtown Coeur d'Alene and Interstate 90 with direct access to busy 3rd Street

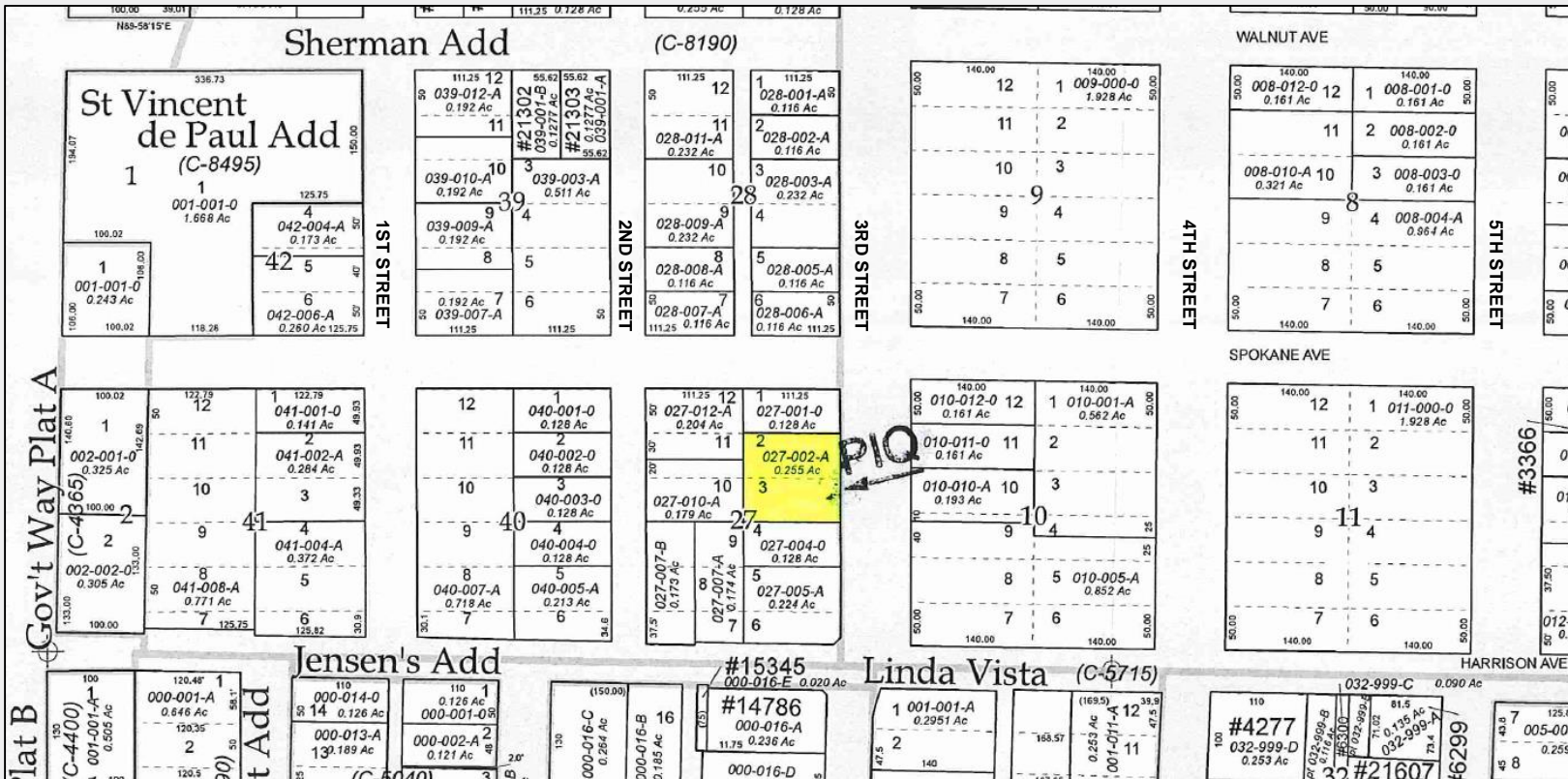
Sale Price: \$125,000

For more information:

Jim Koon, Managing Broker
(208) 665-6475 or (208) 640-9470
jim@cdabroker.com

Demographics	1 Mile	3 Mile	5 Mile
2013 Total Population	12,288	51,918	73,373
2013 Daytime Population	25,562	66,378	86,688
Median Household Income	\$31,456	\$43,342	\$46,805
Average Household Income	\$37,454	\$55,175	\$58,292
% Population Change 10-13	1.81%	2.64%	2.48%
% Population Change 00-13	13.58%	26.28%	28.16%

Midtown Commercial Land For Sale



For more information:

Jim Koon, Managing Broker

(208) 665-6475 or (208) 640-9470

jim@cdabroker.com

NO WARRANTY OR REPRESENTATION, EXPRESS OR IMPLIED, IS MADE AS TO THE ACCURACY OF THE INFORMATION CONTAINED HEREIN, AND THE SAME IS SUBMITTED SUBJECT TO ERRORS, OMISSIONS, CHANGE OF PRICE, RENTAL OR OTHER CONDITIONS, PRIOR SALE, LEASE OR FINANCING, OR WITHDRAWAL WITHOUT NOTICE, AND OF ANY SPECIAL LISTING CONDITIONS IMPOSED BY OUR PRINCIPALS NO WARRANTIES OR REPRESENTATIONS ARE MADE AS TO THE CONDITION OF THE PROPERTY OR ANY HAZARDS CONTAINED THEREIN ARE ANY TO BE IMPLIED.

Black Commercial, Inc
105 N. 1st Street, Suite 300
Coeur d'Alene, Idaho 83814
www.cdabroker.com