



**1016 Hayden Avenue
Hayden, Idaho 83835**

Building Size: 2,900 +/- square feet with 360 +/- square foot mezzanine office
Land Size: 0.33 acres

Details

- Zoning: Commercial
- 2020 Taxes: \$2,603.61
- 2 ground level loading truck doors

Comments:

Office/Retail building with showroom and warehouse on Hayden Avenue.
Currently leased, please do not disturb the Tenant.

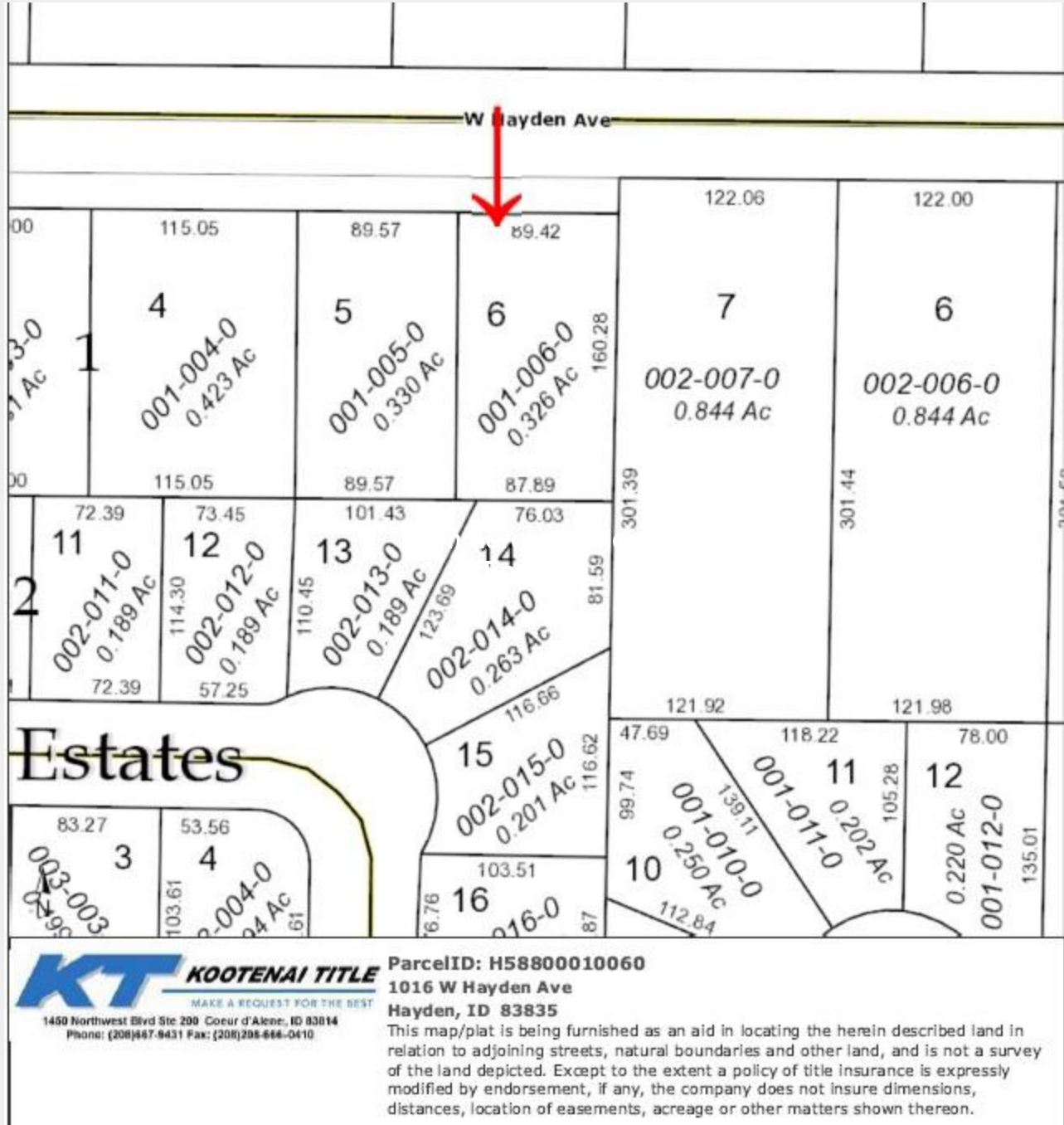
Sale Price: \$475,000.00

Jim Koon, Managing Broker

(208) 665-6475 or (208) 640-9470
jim@cdabroker.com

1016 Hayden Avenue

Hayden, Idaho 83835



Jim Koon, Managing Broker

(208) 665-6475 or (208) 640-9470

jim@cdabroker.com