



## 9013 N Hess Street

Hayden, Idaho 83835

### Features:

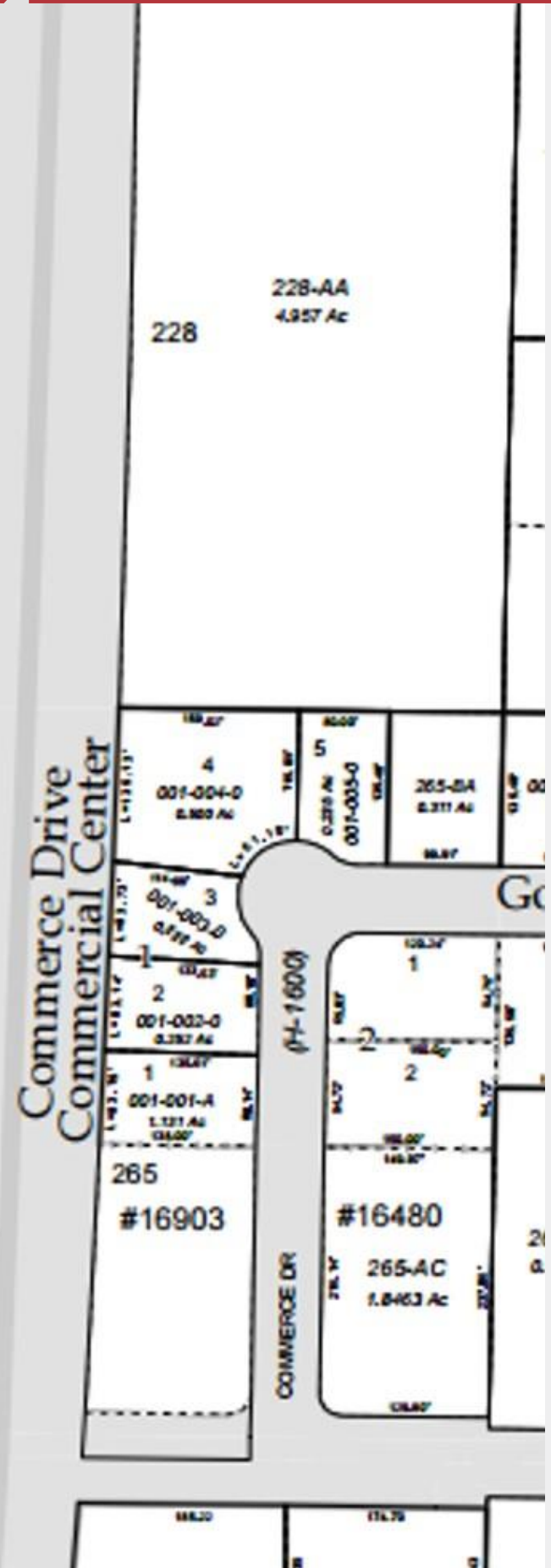
- **Parcel Size:** 15,289 Square Feet
- **Location:** Hess Street which parallels Highway 95 just up the street from Walmart.
- **Neighboring Businesses:** Many national retailers, Office and Medical Businesses surround this property.
- **Access:** Easy Access from Highway 95 at Honeysuckle
- **2017 Taxes:** \$767
- **Parcel #:** H2040004005B
- **Dimensions:** 90' x 170'
- **Legal Description:** DAVIS CENTER, LT 5 BLK 4 EX W 30 FT HAYDEN URD BASE YEAR 2005

## SALE PRICE: \$95,000 Priced to Sell

**Jim Koon, Managing Broker**  
(208) 665-6475 or (208) 640-9470  
jim@cdabroker.com

Black Commercial, Inc  
105 N. 1<sup>st</sup> Street, Suite 300  
Coeur d'Alene, Idaho 83814  
[www.cdabroker.com](http://www.cdabroker.com)





For more information:

**Jim Koon, Managing Broker**

(208) 665-6475 or (208) 640-9470

[jim@cdabroker.com](mailto:jim@cdabroker.com)