

Prime Commercial  
Land  
For Sale



Sale Price:  
\$574,000.00

**3334 E. Mullan Ave.**

Post Falls, Idaho 83854

**Jim Koon, Managing Broker**

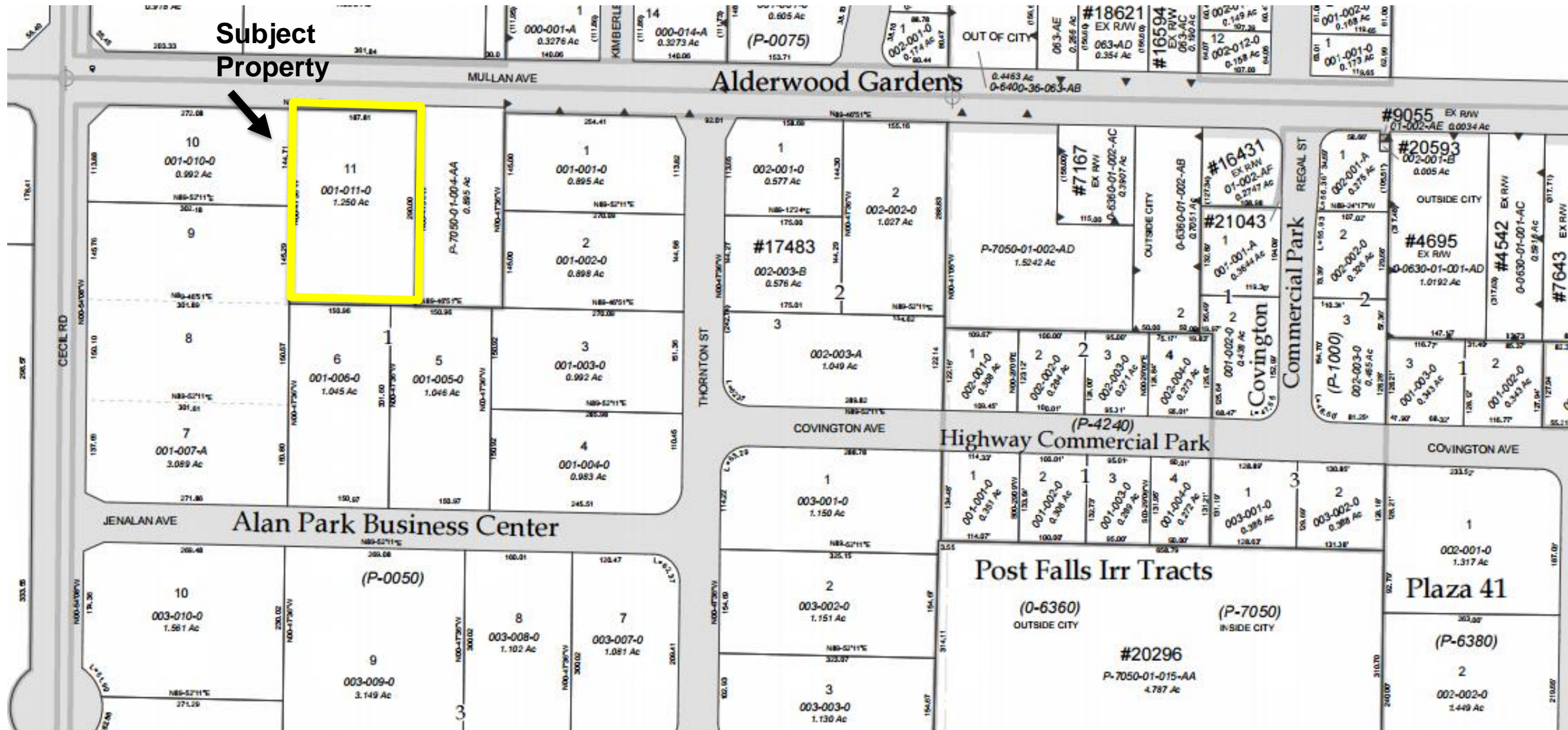
(208) 665-6475 or (208) 640-9470  
jim@cdabroker.com

**Property Information:**

- **Size:** 1.25 Acres
- **Zoning:** Industrial (City of Post Falls)
- **Neighborhood:** Rapidly growing commercial/residential neighborhood surrounds property with many national retail tenants, dense residential coupled with expansive medical offices and government building development

- **Access:** Minutes to the I-90 & Hwy 41 interchange. Direct access off Mullan Avenue
- **Legal Description:** ALAN PARK BUSINESS CENTER, LT 11 BLK 1 URD EAST PF 2002
- **2019 Taxes:** \$6,504.43

Black Commercial, Inc  
105 N. 1<sup>st</sup> Street, Suite 300  
Coeur d'Alene, Idaho 83814  
[www.cdabroker.com](http://www.cdabroker.com)



**Subject Property**



For more information:

**Jim Koon, Managing Broker**  
(208) 665-6475 or (208) 640-9470  
jim@cdabroker.com

NO WARRANTY OR REPRESENTATION, EXPRESS OR IMPLIED, IS MADE AS TO THE ACCURACY OF THE INFORMATION CONTAINED HEREIN, AND THE SAME IS SUBMITTED SUBJECT TO ERRORS, OMISSIONS, CHANGE OF PRICE, RENTAL OR OTHER CONDITIONS, PRIOR SALE, LEASE OR FINANCING, OR WITHDRAWAL WITHOUT NOTICE, AND OF ANY SPECIAL LISTING CONDITIONS IMPOSED BY OUR PRINCIPALS NO WARRANTIES OR REPRESENTATIONS ARE MADE AS TO THE CONDITION OF THE PROPERTY OR ANY HAZARDS CONTAINED THEREIN ARE ANY TO BE IMPLIED.

Black Commercial, Inc  
105 N. 1<sup>st</sup> Street, Suite 300  
Coeur d'Alene, Idaho 83814  
[www.cdabroker.com](http://www.cdabroker.com)