



2025 W. Park Place, Suite 101

Coeur d'Alene, Idaho 83814

Features:

Approximately 2,000 square foot office space. Offering Built-in reception counter with large waiting area, 7 private offices, conference room, coffee bar, and data room.

Location:

Located near Kootenai Health, Government Entities, Restaurants, and Hotels. Excellent signage on the corner of Ironwood Drive and Lakewood Drive.

Lease Rate: \$1.50 per square foot Full Service, excludes Janitorial

Jim Koon, Managing Broker

(208) 665-6475 or (208) 640-9470

jim@cdabroker.com



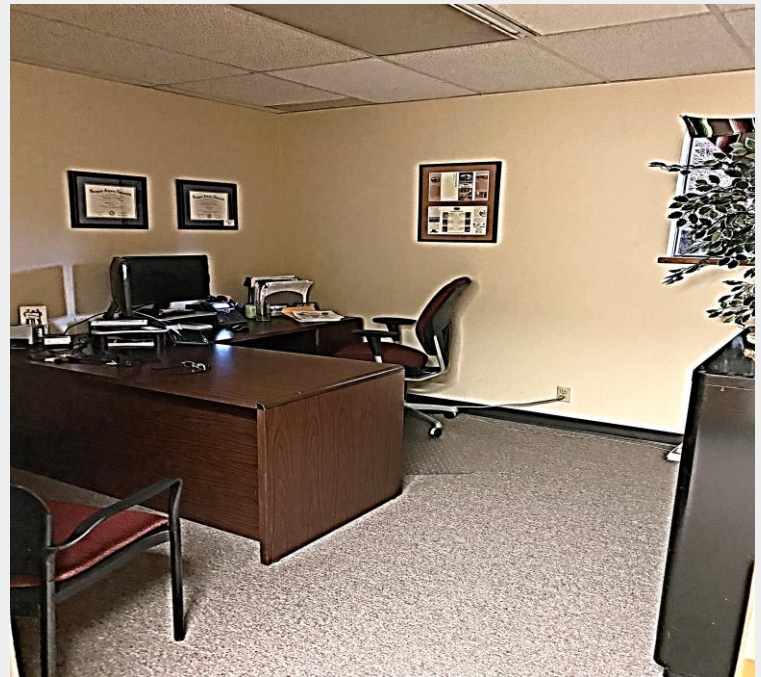
Reception Area



Waiting Room



Conference Room



Office

For more information:

Jim Koon, Managing Broker

(208) 665-6475 or (208) 640-9470

jim@cdabroker.com